





**BIBIM EXPRESS**

2020 S 320th St Suite D Federal Way, WA 98003

PROJECT NAME :

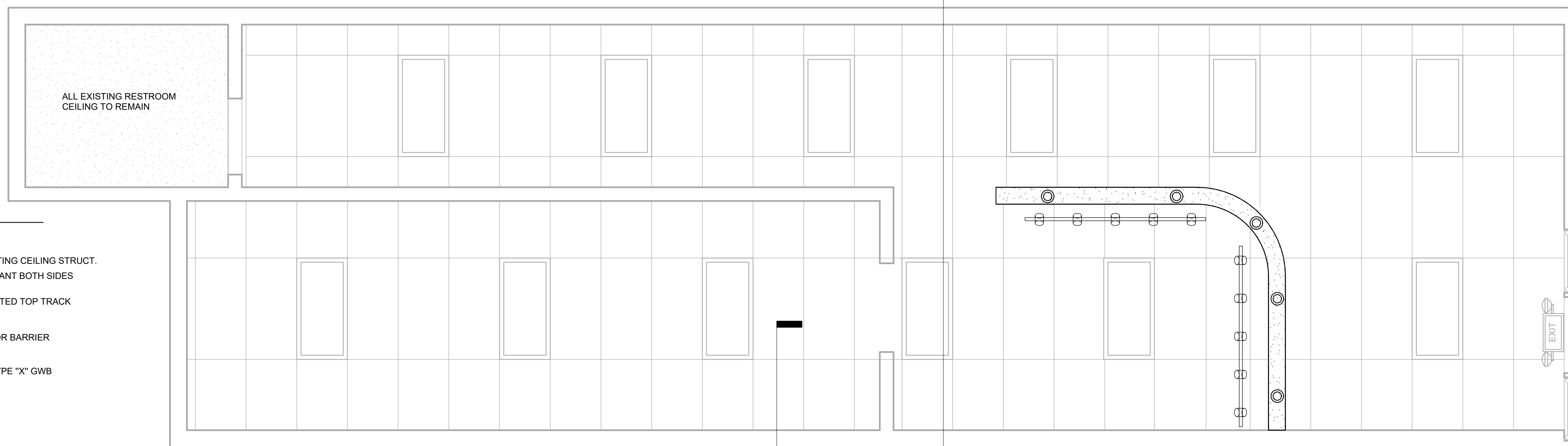
**REFLECTED CLG, SECTION & DETAILS**

DATE 1/22/2024 10:12:59 AM

**A102**

SCALE As indicated

A-A  
A102

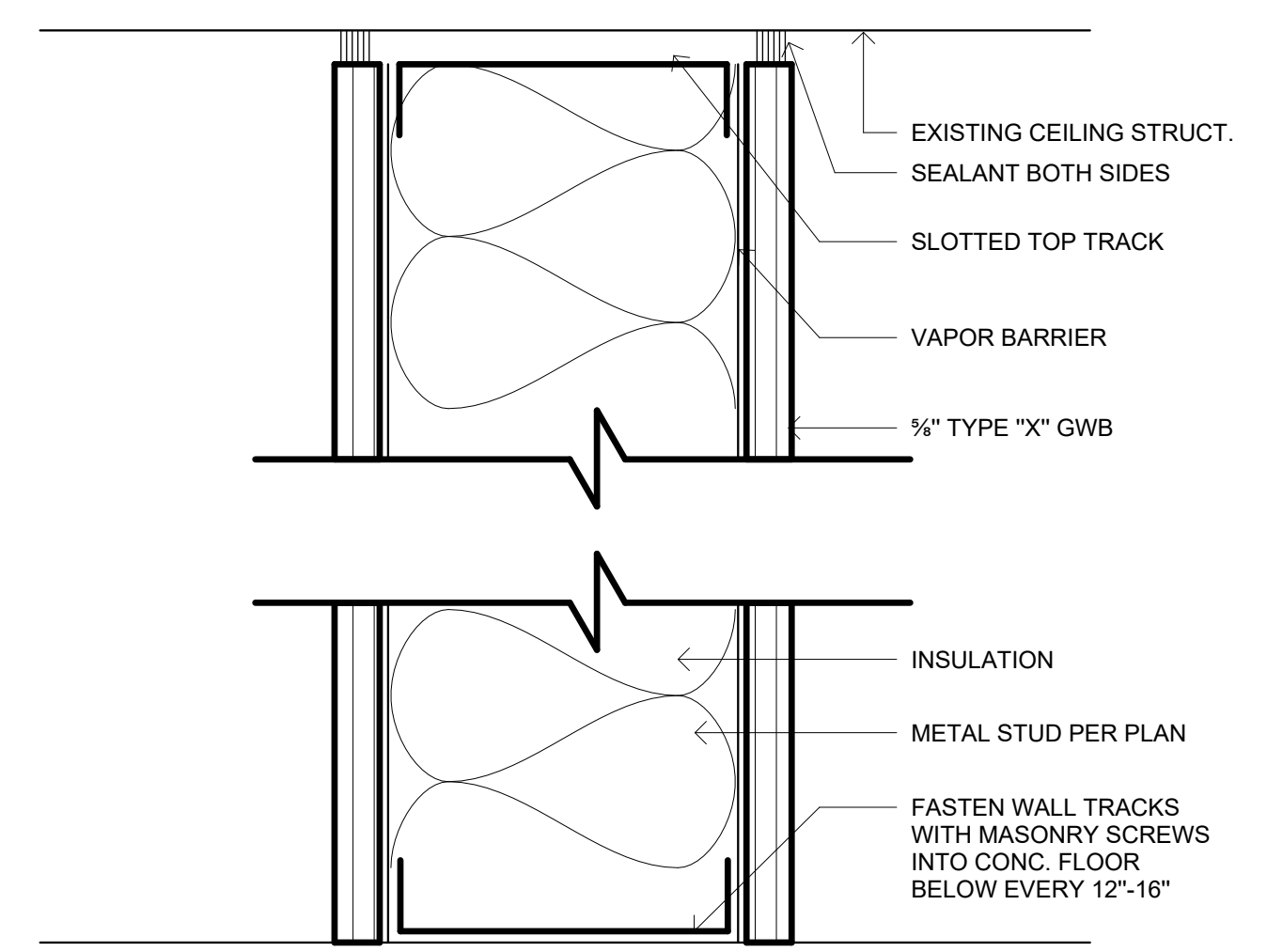
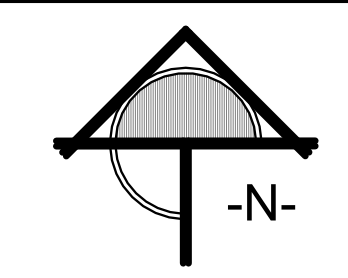


**REFLECTED CEILING PLAN**

3/8" = 1'-0"

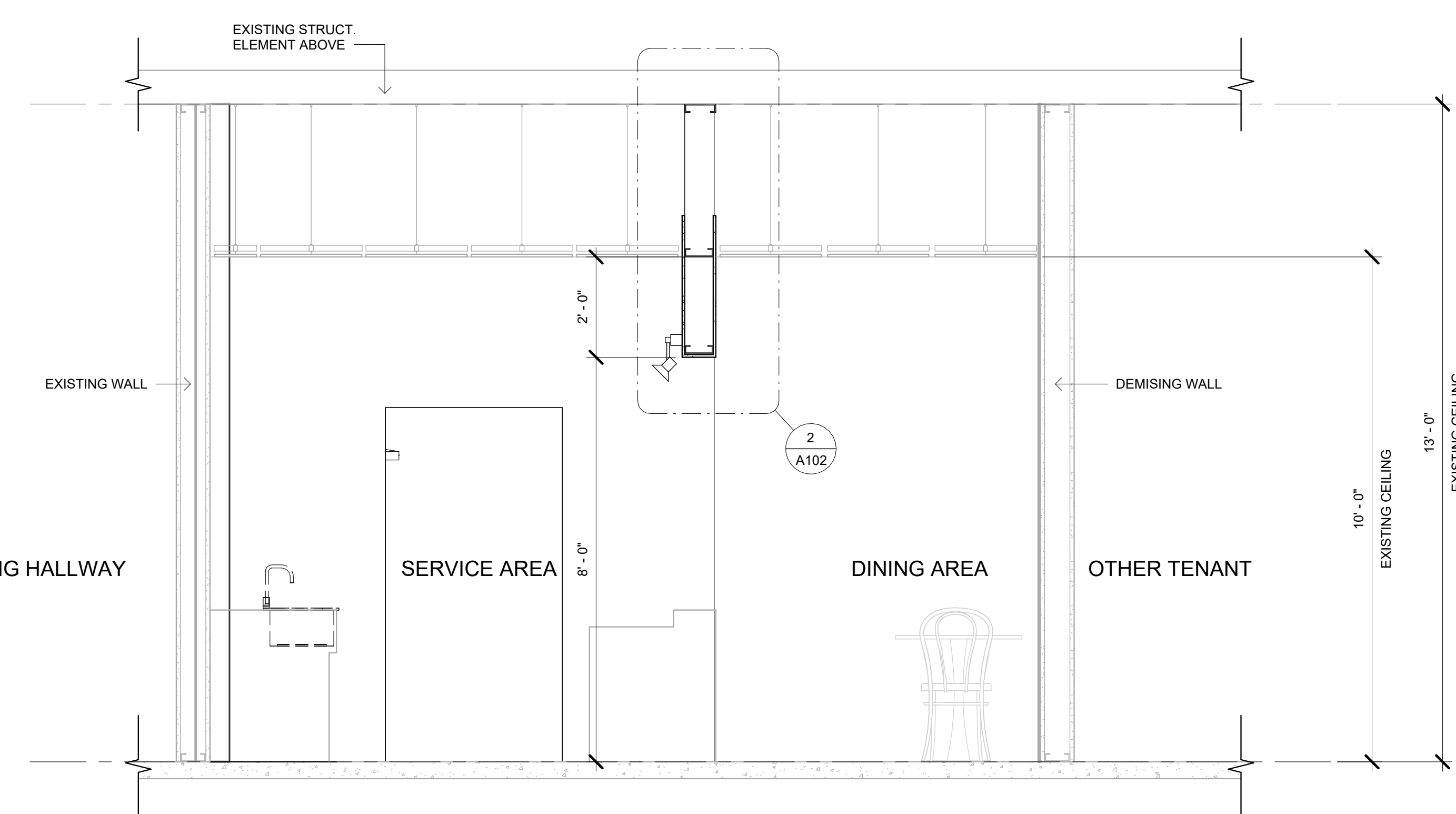
LEGEND	
	EXISTING EMERGENCY EXIT LIGHT
	NEW CEILING CAN LIGHT
	NEW TRACK LIGHT
	EXISTING 2x4 CEILING LIGHT

- NOTES:**
- ALL EXISTING CEILING TO REMAIN
  - ALL EXISTING LIGHTS TO REMAIN
  - ALL EXISTING 2x4 LIGHTING TO REMAIN
  - ALL SPRINKLER SYSTEM TO REMAIN
  - ALL MECHANICAL VENTS TO REMAIN



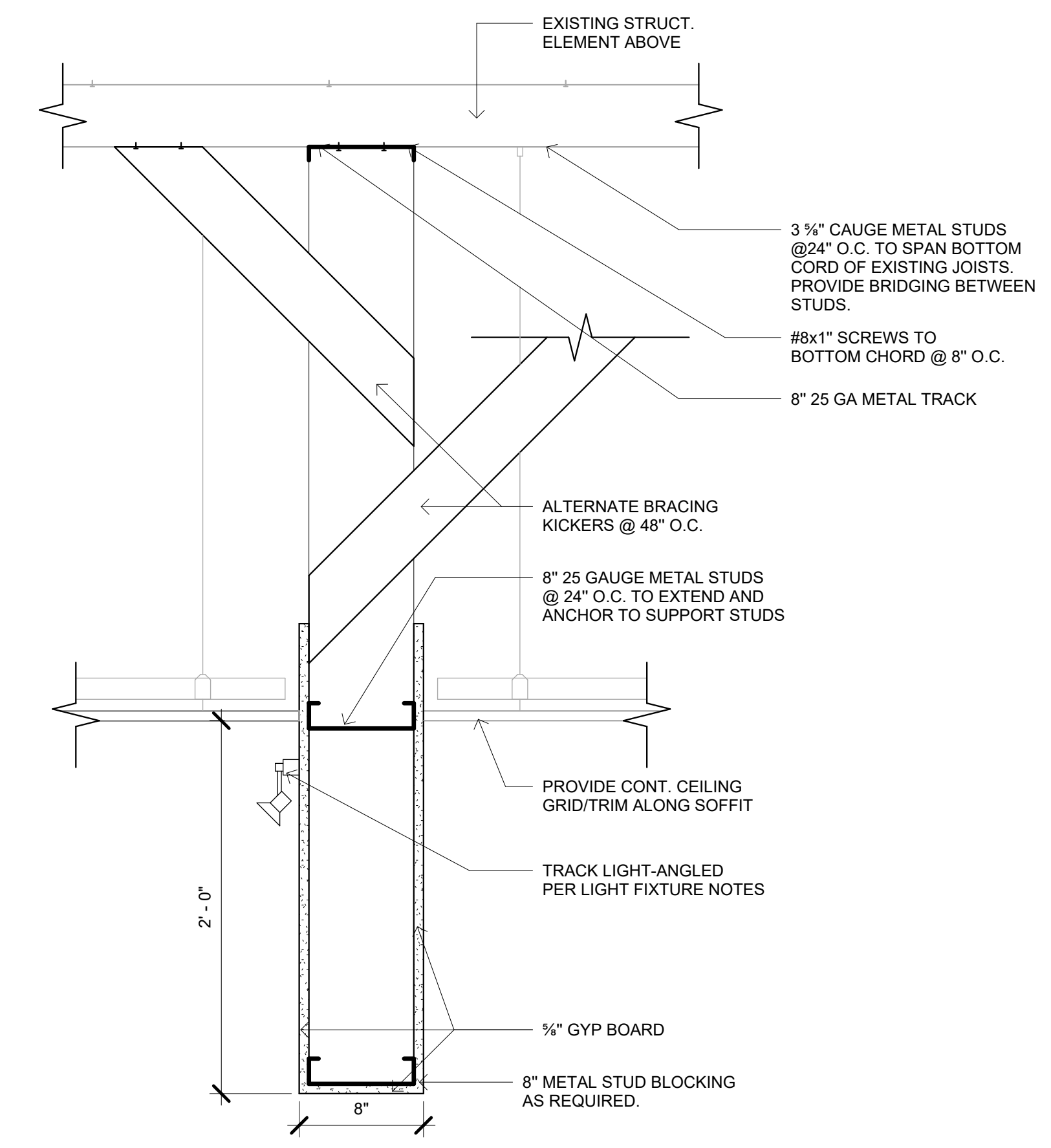
**METAL STUD DETAIL**

3/8" = 1'-0"



**SECTION A-A**

1/2" = 1'-0"



**SOFFIT @ DINING ROOM**

1 1/2" = 1'-0"

1

2  
A102

2

**TYP. WATER SUPPLY FIXTURE UNITS (WSFU) AT KITCHEN**

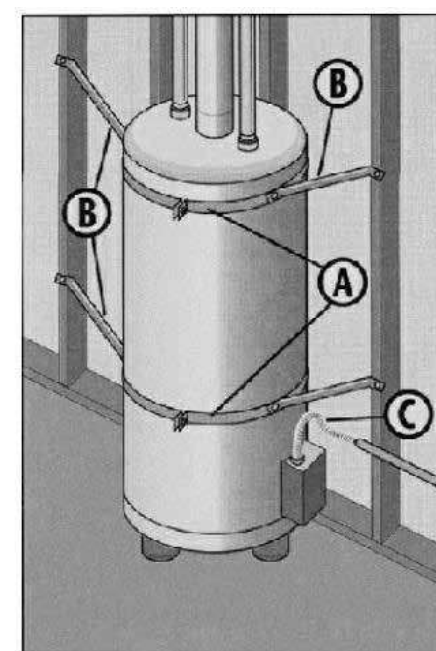
	DESCRIPTION, MADE / MODEL	QT	WSFU		PIPE SIZING	
			EACH	TOTAL	CWFU / EA	HWFU / EA
1	MOP SINK	1	3	3	2.25	2.25
2	3 COMPARTMENT SINK	1	3	3	2.25	2.25
3	HAND SINK	2	2	4	1.5	1.5
4	DISHWASHER	1	2	2	-	2
5	DUMP SINK	1	2	2	1.5	1.5
6	WATER CLOSET N/A	-	-	-	-	-
7	LAVATORY N/A	-	-	-	-	-
8	URINAL N/A	-	-	-	-	-
9	ICE MAKER	1	2	2	1.5	1.5
TYP. WSFU AT KITCHEN				16		

**NOTE:**

- FIXTURE ITEM NUMBER PER EQUIPMENT SCHEDULE ON ARCHITECTURAL PLAN
- SIZING PER UPC TABLE 610.4, BUILDING WATER PRESSER RANG AT 40 TO 60 PSI
- ALL PIPE MATERIAL SHALL COMPLY WITH UPC SEC. 603 AND TABLE 14-1 TO USE PLEX
- FIXTURE WITH BOTH HOT AND COLD WATER CONNECTION, RATE ON EACH COLD AND HOT WATER FIXTURE UNIT IS ACCORDING TO TABLE 610.3 FOOTING NOTES #3N (3/4 OF LISTED VALUE)

**LEGEND & ABBREVIATION**

- COLD WATER PIPE
- - - HOT WATER PIPE
- CIRCLE SHOWS THE VERTICAL PIPE
- ✕ SHUT OFF VALVE
- ✕✕ SHUT OFF AND FIXTURE CONNECTION
- ⊗ REDUCED PRESSURE BACKFLOW ASSEMBLY (RPBA)
- ⊗ TRAP SEAL PRIMER VALVE
- CWFU COLD WATER FIXTURE UNIT
- HWFU HOT WATER FIXTURE UNIT
- M TENANT METER



Wrap a 1-1/2-inch-wide, 16-gauge-thick metal strap (A) around the top of the water heater and bolt the ends together. Do the same about 1/3 of the way up the side of the water heater. Take four lengths of EMT electrical conduit, each no longer than 30 inches. Flatten the ends. Bolt one end to the metal strap as shown (B). Screw the other end to a 2-inch by 4-inch stud in the wall using a 5/16-inch by 3-inch lag screw. Be sure a flexible pipe (C) is used to connect the gas supply to the heater.

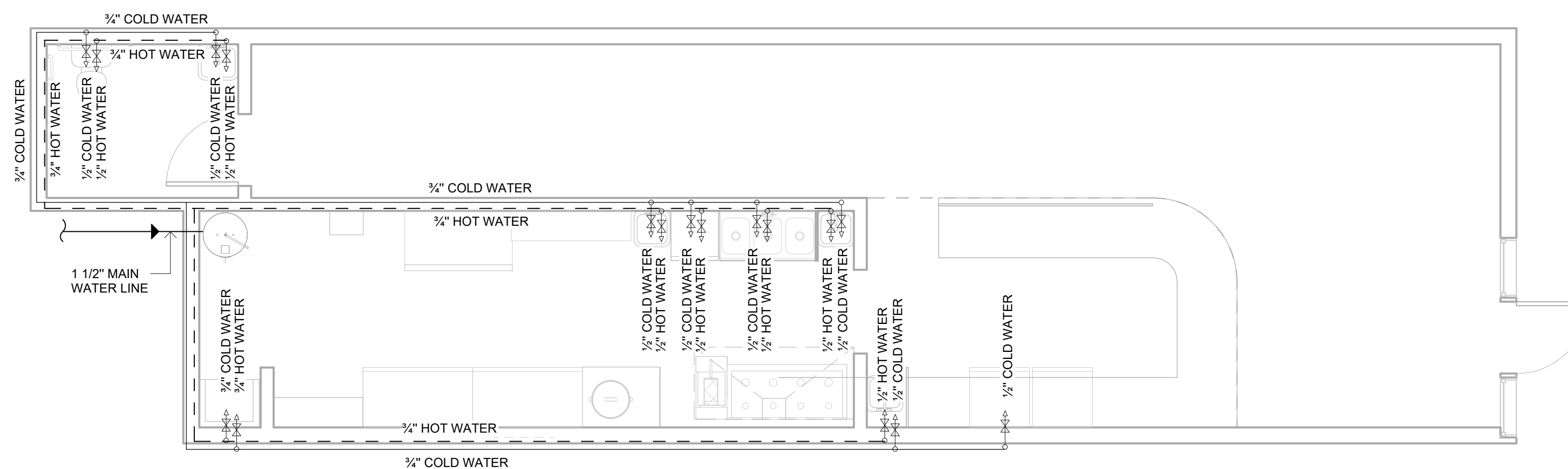
Additionally, you can find strap kits at hardware stores and online with all of these items and complete instructions.

**WATER HEATER DETAIL**

N.T.S.

**NOTES:**

1. ALL PLUMBING WORK SHALL COMPLY WITH 2018 UPC, 2018 IFGC AND LOCAL CODE, LANDLORD'S CRITERIA AND REGULATIONS.
2. ALL WATER PIPE MATERIAL SHALL COMPLY WITH UPC SEC. 604 AND TABLE 604.1
3. COLD WATER LINE IN UN-CONDITIONED AREA SHALL BE INSULATED; ALL PIPING INSULATION AND COVERING SHALL HAVE AN ASTM FLAME SPREAD RATING OF 25 OR LESS AND AN ASTM SMOKE DEVELOPED RATING OF 50 OR LESS
4. PROVIDE AUTOMATIC VACUUM-BREAKER ON MOP SINK FAUCETS, AND ANY OTHER BIBBS.
5. HOT WATER TEMPERATURE SHALL BE 110°F MIN. TO ALL FIXTURES REQUIRE HOT WATER.
6. PROVIDE TRAP PRIMER FOR ANY FLOOR DRAIN.
7. INSTALL AIR CHAMBERS OR SHOCK ABSORBERS IN PIPING SYSTEM TO PREVENT NOISE AND DAMAGE DUE TO WATER HAMMER.
8. ALL FAST-ACTING VALVES REQUIRE WATER HAMMER ARRESTORS. THIS APPLIES TO ANY EQUIPMENT WITH SOLENOID-ACTIVATED VALVES, AND ALSO TO LEVER-OPERATED HOSE SPRAYERS, INCLUDING AT PRODUCE CASES.
9. SIZING PER UPC TABLE 610.3 & 610.4, SET BUILDING WATER PRESSER RANG AT 40 TO 60 PSI. MAX. DISTANCE FROM WATER MAIN TO THE MOST REMOTE FIXTURE IS LESS THAN 58', SET AS 60'



**WATER SUPPLY FLOOR PLAN**

1/4" = 1'-0"

PROJECT NAME :

**WATER SUPPLY  
PLAN**

DATE 1/22/2024 10:13:08 AM

**A103**

SCALE As indicated

**BIBIM EXPRESS**

2020 S 320th St Suite D Federal Way, WA 98003

**NOTES:**

- ALL INDIVIDUAL VERTICAL VENT PIPE SHALL BE 1.5" MIN. UNLESS NOTED
- ALL UNDERGROUND DRAIN PIPE SHALL BE 2" UNLESS NOTED.
- ALL DFU AND TRAP PER UPC 2018 TABLE 702.1, ASSEMBLY PUBLIC USE
- ALL TRAP AND ARM MIN. SIZE PER UPC TABLE 702.1.
- ALL PIPE SIZE PER UPC 2018 TABLE 703.2
- PROVIDE TRAP PRIMER FOR ANY FLOOR DRAIN.
- VENT OUTLET ON ROOF SHALL BE 6" MIN. ABOVE ROOF SURFACE.

**GREASE TRAP SIZING**

-- BASED UPON 2018 UPC TABLE 702.2 AND 1002.2  
-- HYDRO MECHANICAL INTERCEPTOR USING GRAVITY FLOW RATES  
(1/4" PER FOOT SLOPE, FACTOR N=0.012, PER MANNING'S FORMULA)

CONNECTED FIXTURE, MADE / MODEL	QT	TRAP SIZE	F/U EACH	F/U TOTAL
3 COMPART. SINK (WASH & RINSE)	1	2"	3	3
MOP SINK	1	2"	3	3
DUMP SINK	1	1.5"	2	2
HAND SINK	2	1.5"	2	2
DISHWASHER	1	2"	2	2
<b>TOTAL</b>				<b>12</b>

3" DRAIN PIPE INSTALLED, MAX. FULL PIPE FLOW: 60 GPM.  
WITH TWO-MINUTE DRAINAGE PERIOD, 35 GPM REQUIRED  
(TABLE 1014.2.1)  
PROVIDE WITH SCHIER GB50 OR SIMILAR, 50 GPM CAPACITY

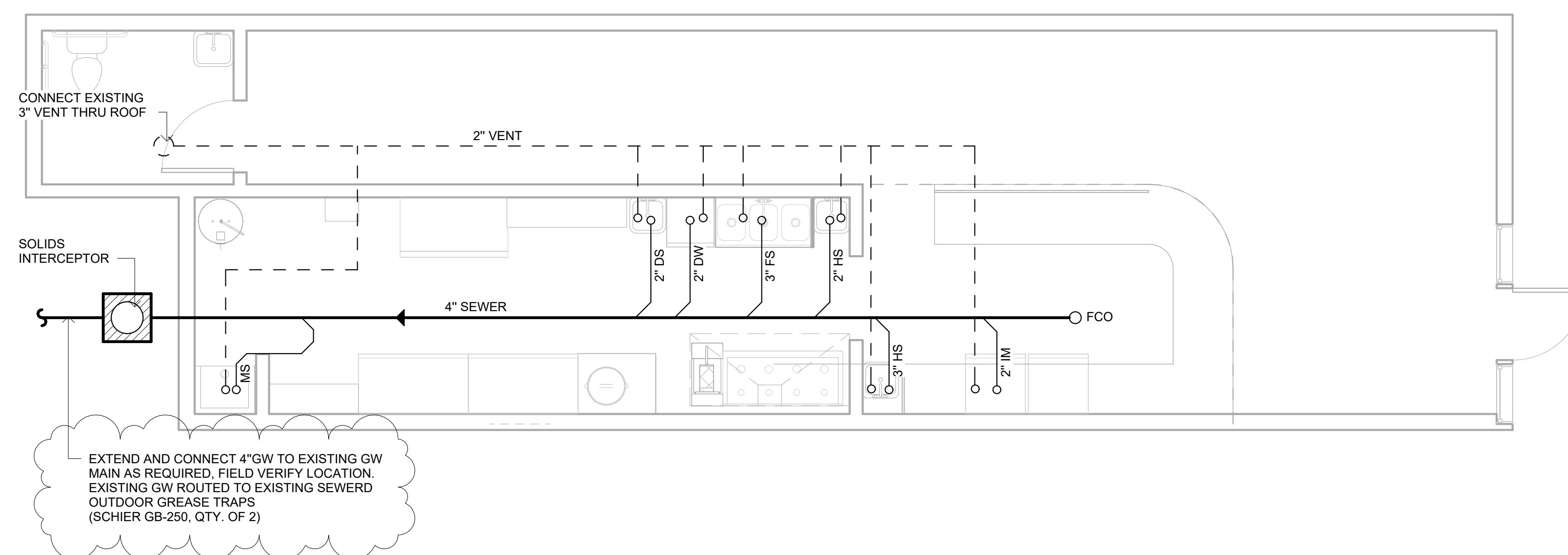
**DRAINAGE FIXTURE SCHEDULE AND SIZING**

DISCRPTION, MADE / MODEL	QT	TRAP SIZE	DFU (EACH)	DFU (TOTAL)
3 COMPARTMENT SINK	1	2"	3	3
HAND SINK	2	1.5"	2	4
DUMP SINK	1	1.5"	2	2
DISHWASHER (INDIRECT DRAIN TO FLOOR SINK)	1	2"	2	4
FLOOR DRAIN N/A	-	-	-	-
LAVATORY SINK N/A	-	-	-	-
WATER CLOSET (1.6 GPM) N/A	-	-	-	-
<b>TOTAL</b>				<b>13</b>

NOTE: -- FIXTURE ITEM NUMBER PER EQUIPMENT SCHEDULE ON ARCHITECTURAL PLAN  
-- TRAP SIZING PER UPC TABLE 702.1  
-- PIPE SIZING PER UPC TABLE 703.2  
-- EXISTING WATER CLOSETS AND LAVATORIES NO CHANGE, THE DRAINAGE FIXTURE UNIT IS NOT COUNTED IN THIS SCHEDULE

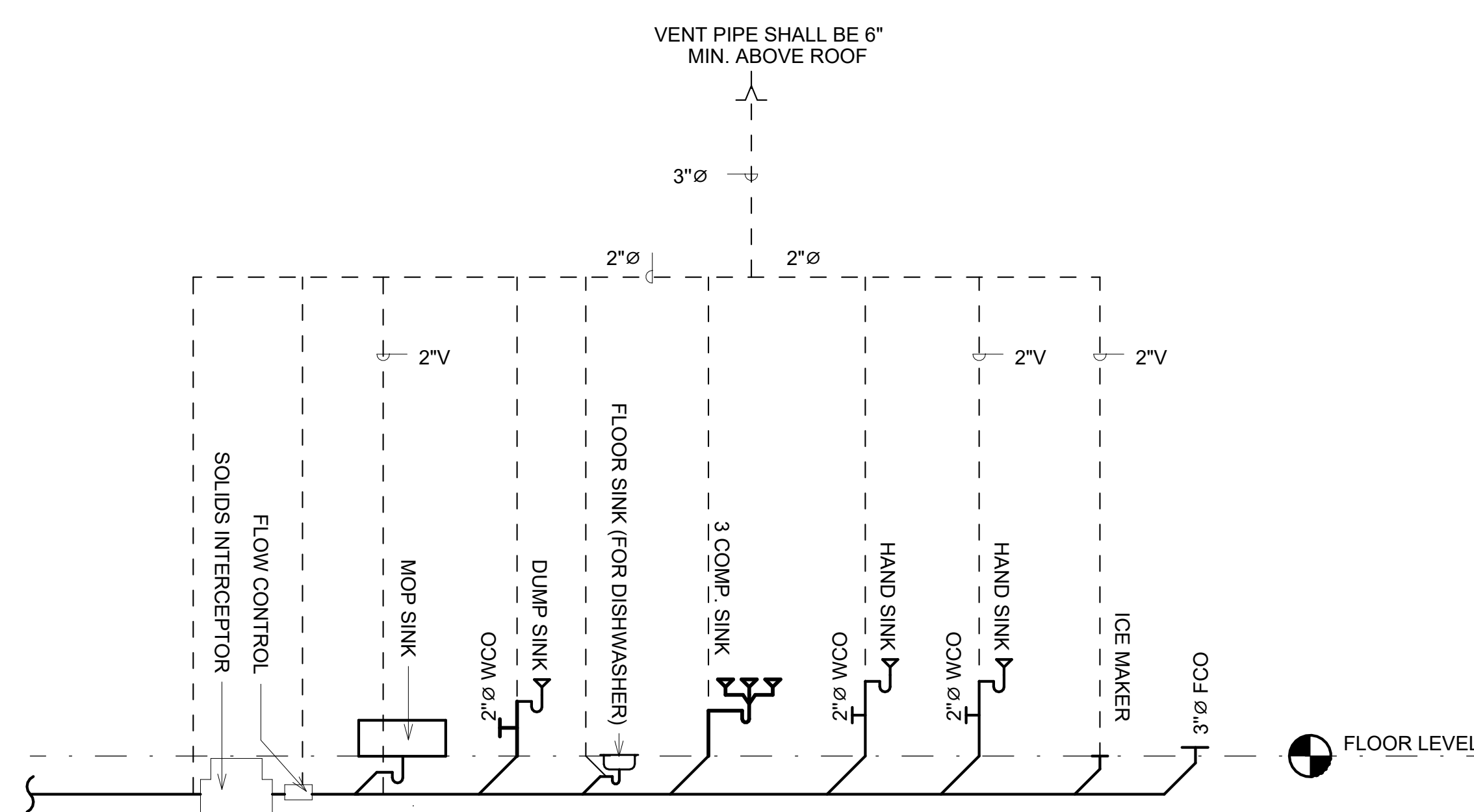
**LEGEND & ABBREVIATION**

- GREASE WASTE PIPE UNDER SLAB
- SEWER WASTE PIPE UNDER SLAB
- 2" MIN. DRAIN PIPE ABOVE SLAB
- VENT (SIZE PER PLAN NOTES)
- WCO -- WALL CLEAN OUT
- FCO -- FLOOR CLEAN OUT
- TRAP SEAL PRIMER VALVE
- FLOOR DRAIN
- o 2"V VERTICAL VENT PIPE & SIZE
- TRAP
- X.X" PIPE SIZE
- FLOOR SINK W/ TRAP
- FLOW & PIPE SLOPE DIRECTION
- F.D. FLOOR DRAIN
- F.S. FLOOR SINK
- H.S. HAND SINK
- M.S. MOP SINK
- D.W. DISHWASHER
- I.M. ICE MAKER



**PLUMBING FLOOR PLAN**

1/4" = 1'-0"



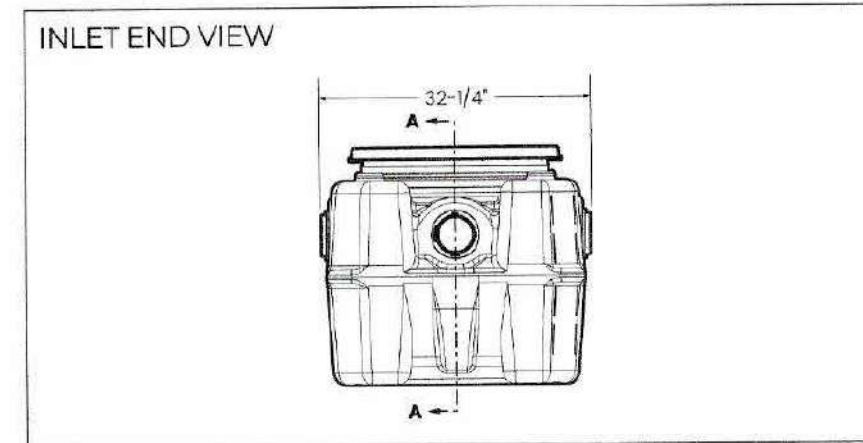
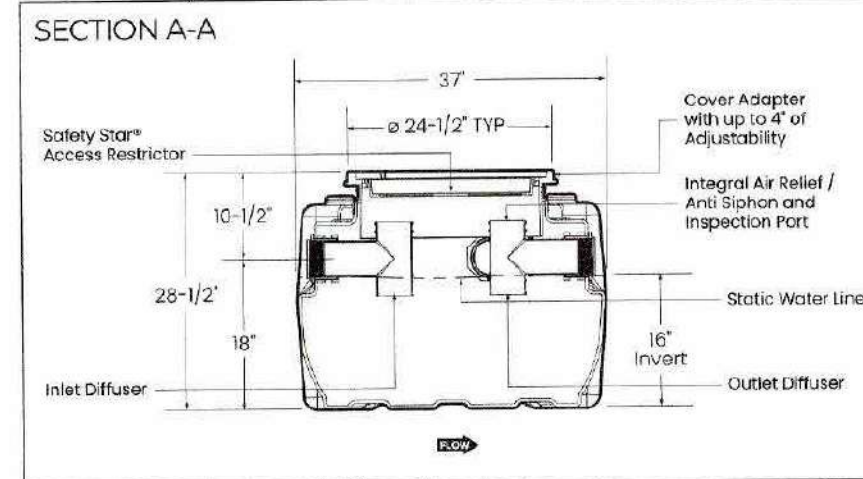
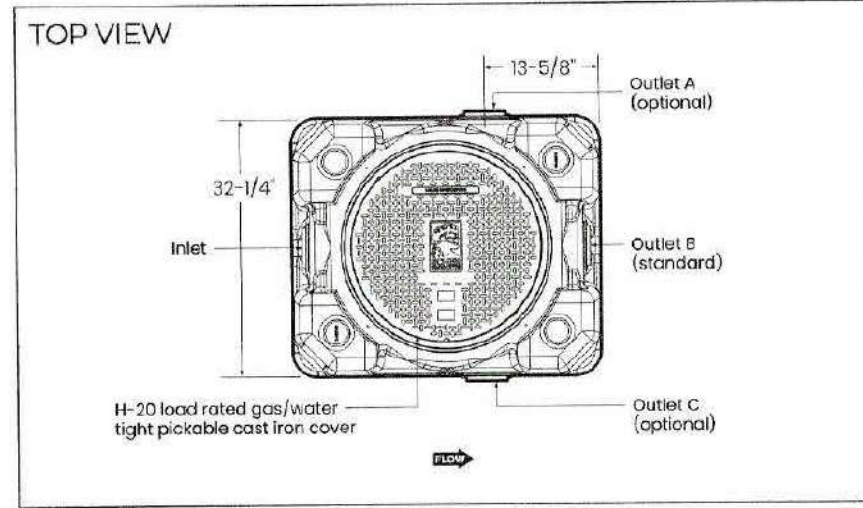
**DRAINAGE RISER DIAGRAM**

1/4" = 1'-0"

**SPECIFICATIONS**

- NOTES**
- 4" FPT with 4" plain end adapters, single inlet and triple outlet
  - Unit weight - w/cover: iron cover: 148 lbs; w/compact cover: 88 lbs. (For wet weight add 142 lbs)
  - Maximum operating temperature: 160° F continuous
  - Capacities - Liquid: 65 gal.; Solids: 53 gal.
  - For gravity drainage applications only
  - Do not use for pressure applications
  - Cover placement allows full access to tank for proper maintenance
  - Vent not required unless per local code
  - Engineered inlet and outlet diffusers are removable to inspect / clean piping
  - Integral or relief / Anti-siphon / Sounding access
  - Adjustable cover adapters provide up to 4" of additional height
  - Safety Star® access restrictor built into cover adapter; prevents accidental entry to tanks (450 to 600 lbs)

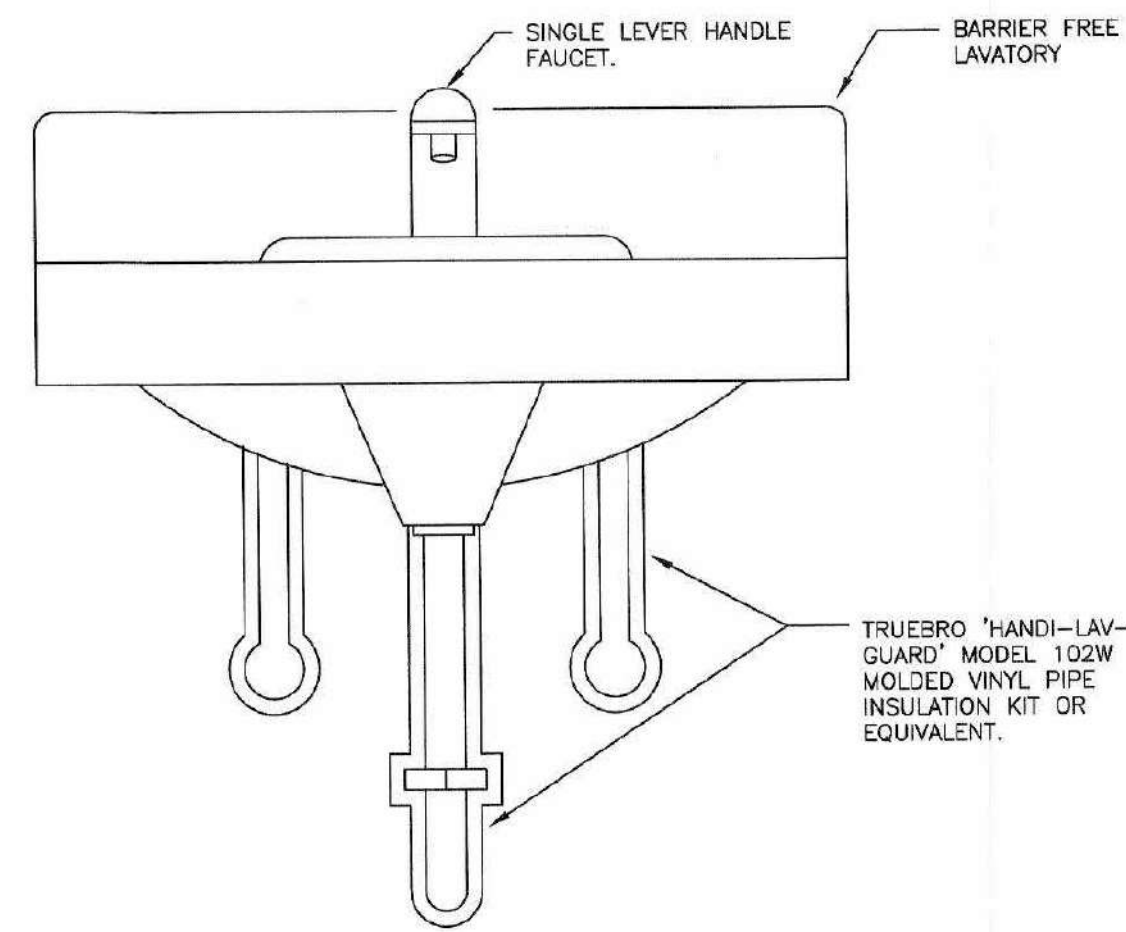
**ENGINEER SPECIFICATION GUIDE**  
Schier Billy Goat® solids interceptor model # SI-50 shall be flame retardant and made in USA of seamless, rotationally-molded polyethylene. Interceptor shall be furnished for above or below grade installation with adjustable cover adapter and Safety Star® access restrictor built into cover adapter and three outlet collars. Interceptor solids capacity shall be 53 gallons. Interceptor maximum flow rate shall be 125 GPM. Cover shall provide water/ gas-tight seal and have minimum 16,000 lbs. load capacity.



	<b>MODEL NUMBER:</b>	<b>DESCRIPTION:</b> 55 Gallon Polyethylene Kitchen Solids Interceptor
	<b>SI-50</b>	
PART #: 8025-002-01   DWG #: B_Kamer   DATE: 9/14/2020   REV:   ECO:		
8100 Woodard Road   Edenbridge, VA 60111   913-951-2000   schierproducts.com   © Copyright 2020 Schier Products Company		

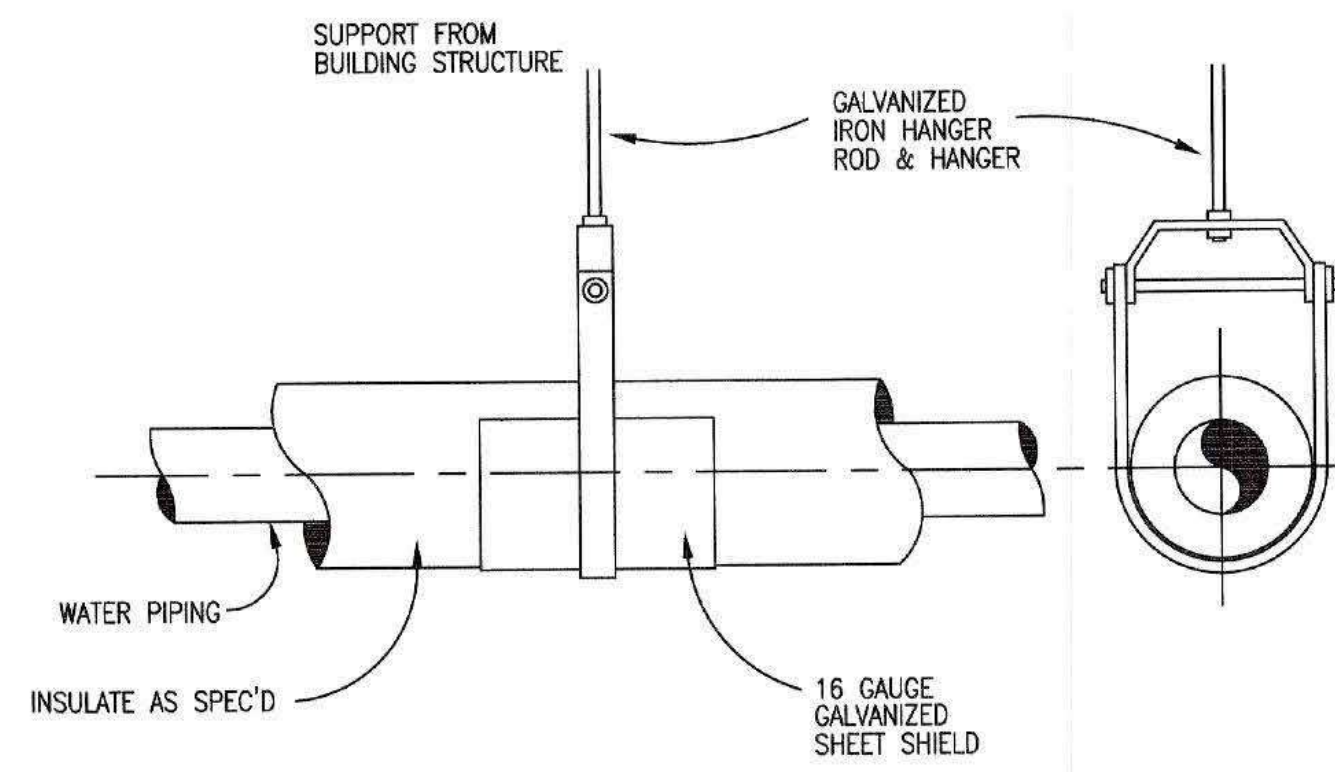
**SOLIDS INTERCEPTOR**

1 1/2" = 1'-0"



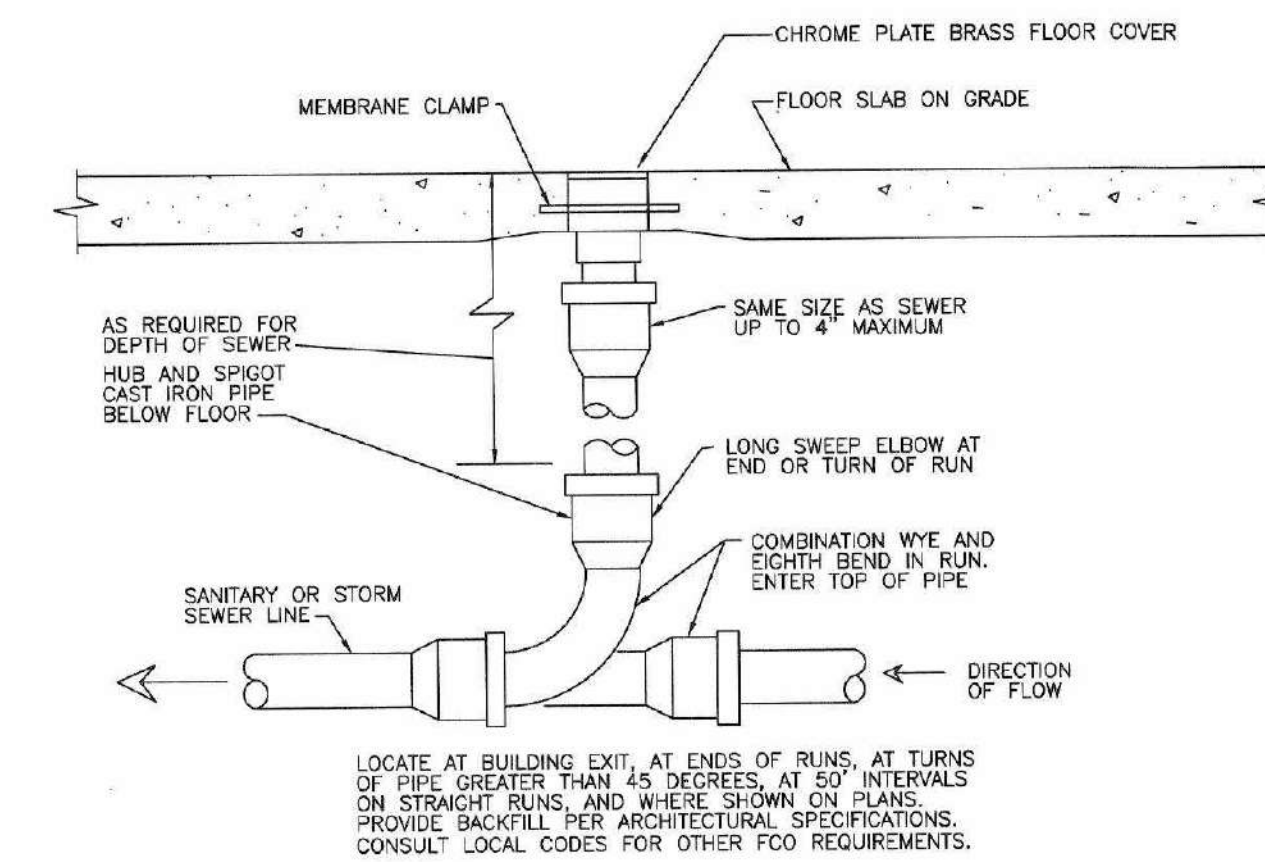
**ADA LAVATORY PIPE COVERS**

1 1/2" = 1'-0"



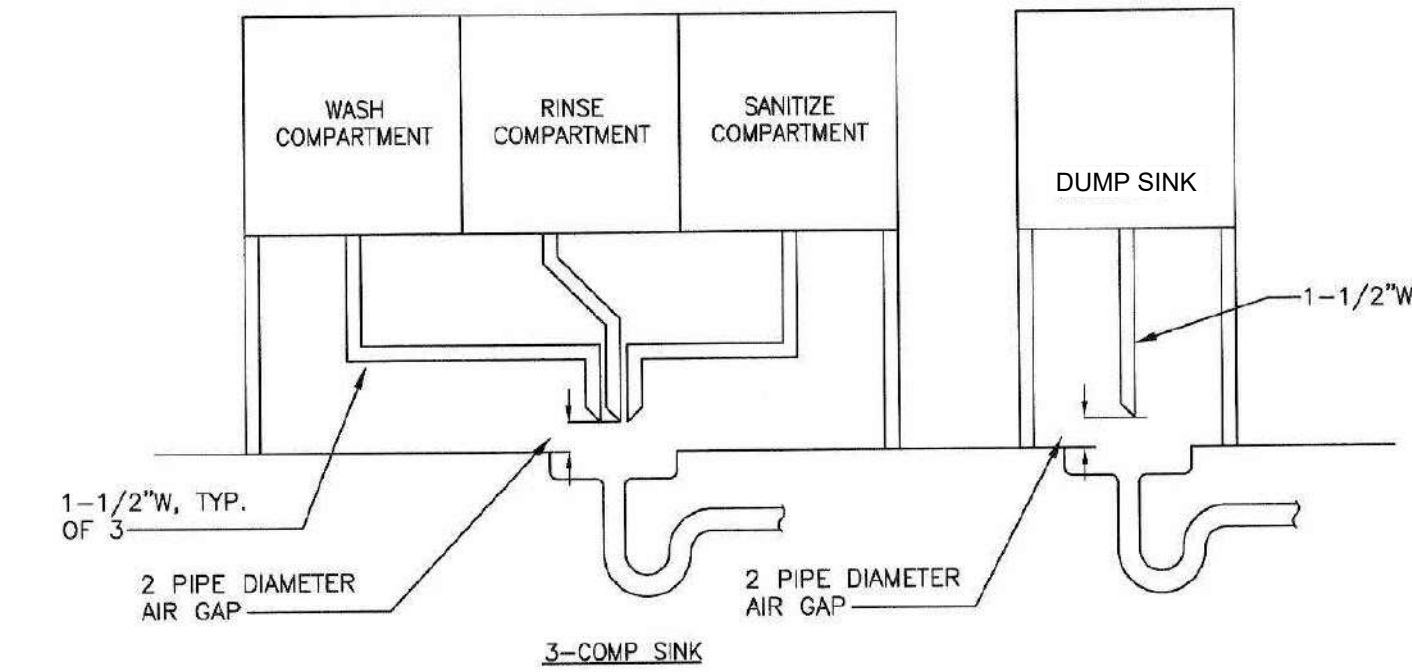
**GENERAL PIPING HANGERS**

1 1/2" = 1'-0"



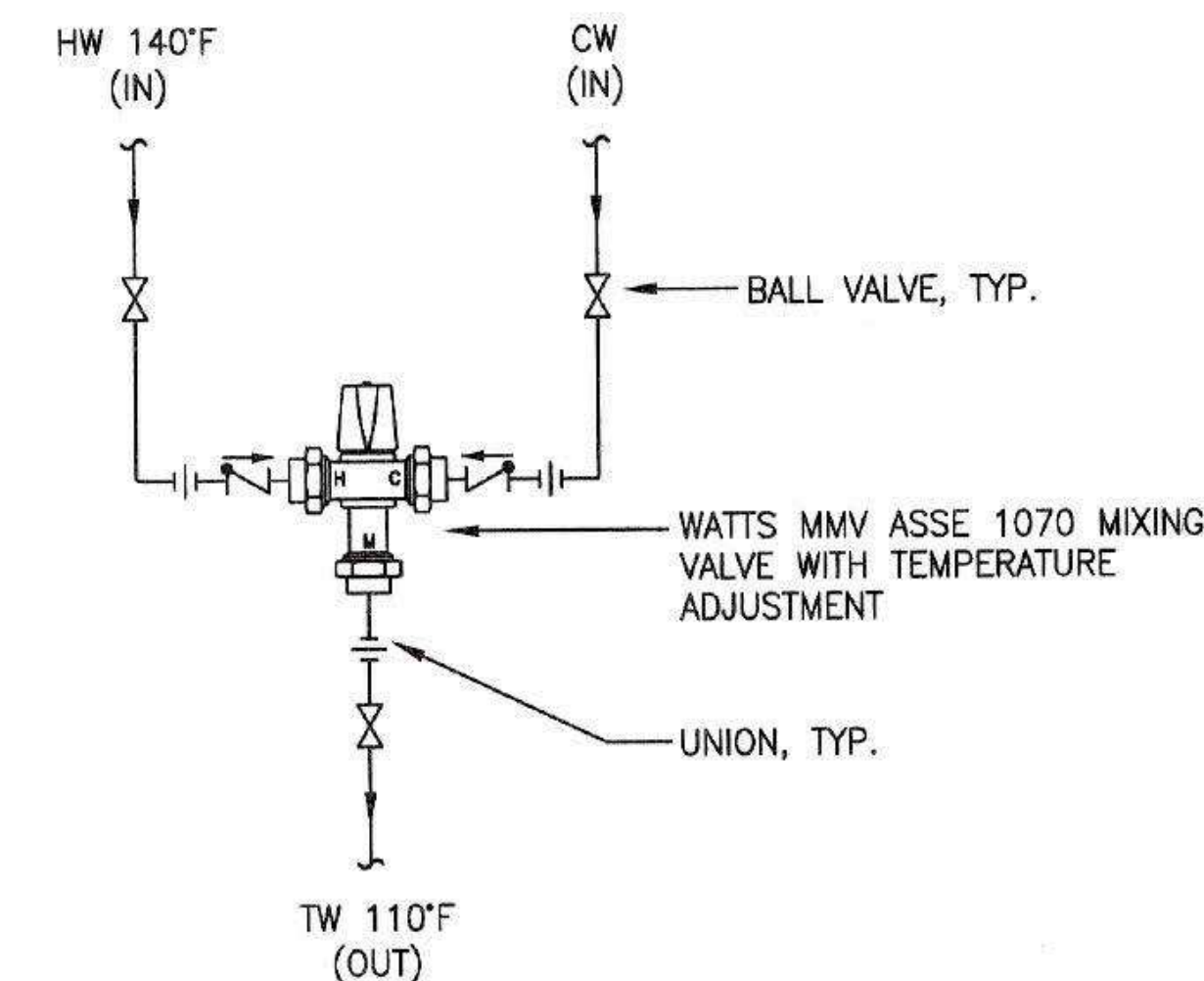
**FLOOR CLEANOUT**

1 1/2" = 1'-0"



**INDIRECT WASTE DETAILS**

1 1/2" = 1'-0"



**THERMOSTATIC MIXING VALVE**

1 1/2" = 1'-0"



3820 N. 27TH STREET  
TACOMA, WA 98407

PHONE #: 253-414-2647  
EMAIL: TANGO615@HOTMAIL.COM

**BIBIM EXPRESS**

2020 S 320th St Suite D Federal Way, WA 98003

PROJECT NAME :

**PLUMBING DETAILS**

DATE 1/22/2024 10:13:23 AM

**A105**

SCALE 1 1/2" = 1'-0"