



GREASE MANAGEMENT

Providing the grease management solution for today's plumbing and food service professionals



With over 15 years of field proven performance and product development, the Endura® Grease Interceptor brand offers comprehensive Grease Management solutions for today's plumbing and commercial foodservice industries.

Endura® Grease Interceptors

Designed to function as high performance hydromechanical grease interceptors (HGI), the original Endura® series offers independently tested & approved solutions for flow rates from 7 GPM to 50 GPM. Injection molded in engineered thermoplastic, with many value-added features, Endura interceptors offer the best value and performance for the grease management needs of commercial foodservice applications.

Available in 7 GPM – 100 GPM

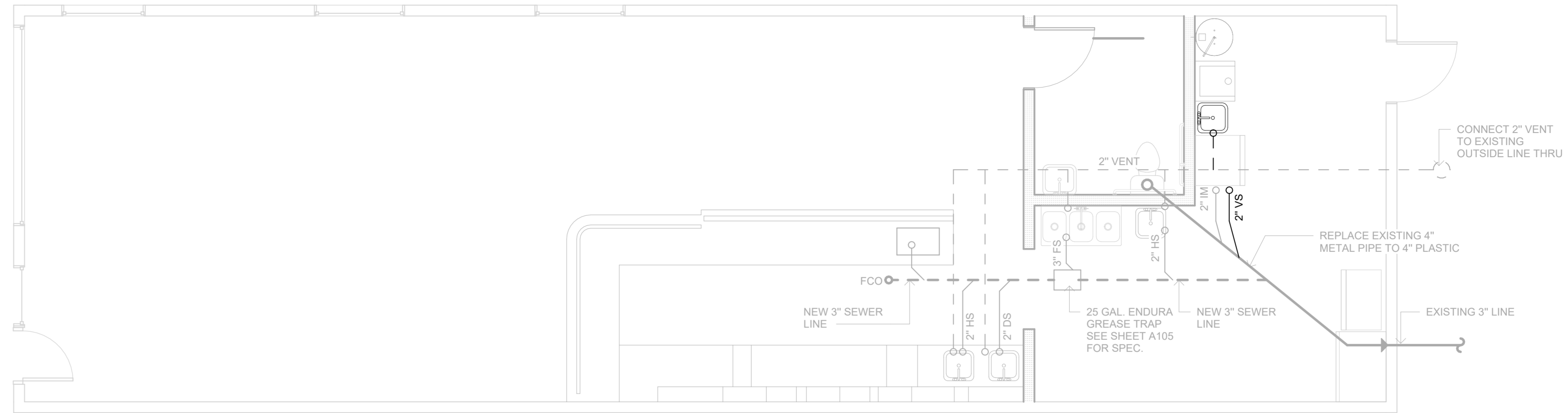
Endura® XL Extended Capacity Grease Interceptors

Comparably compact, durable and highly effective Endura® XL 75 and XL100 models are both based on Hydromechanical operation offering viable alternatives to traditional large capacity Gravity Grease Interceptors (GGI). Endura XL units can replace gravity interceptors up to 1500 gallons unit for unit, all wetted surfaces and components remaining accessible in operation, even below grade.

U.S. Customers call IPEX USA LLC.
 Eastern U.S. Toll Free: 1-800-463-9572 Western U.S. Toll Free: 1-888-461-5307
 tech-support@endurainterceptor.com



1 PLUMBING FLOOR PLAN
1/4" = 1'-0"



NOTES:

- ALL INDIVIDUAL VERTICAL VENT PIPE SHALL BE 1.5" MIN. UNLESS NOTED
- ALL UNDERGROUND DRAIN PIPE SHALL BE 2" UNLESS NOTED.
- ALL DFU AND TRAP PER UPC 2018 TABLE 702.1, ASSEMBLY PUBLIC USE
- ALL TRAP AND ARM MIN. SIZE PER UPC TABLE 702.1.
- ALL PIPE SIZE PER UPC 2018 TABLE 703.2
- PROVIDE TRAP PRIMER FOR ANY FLOOR DRAIN.
- VENT OUTLET ON ROOF SHALL BE 6" MIN. ABOVE ROOF SURFACE.

GREASE TRAP SIZING

-- BASED UPON 2018 UPC TABLE 702.2 AND 1002.2
 -- HYDRO MECHANICAL INTERCEPTOR USING GRAVITY FLOW RATES
 (1/4" PER FOOT SLOPE, FACTOR N=0.012, PER MANNING'S FORMULA)

CONNECTED FIXTURE, MADE / MODEL	QT	TRAP SIZE	F/U EACH	F/U TOTAL
3 COMPART. SINK (WASH & RINSE)	1	2"	3	9
DUMP SINK	1	1.5"	1	1
ESPRESSO MACHINE	1	1.5"	1	1
VEGETABLE SINK	1	1.5"	1	1
TOTAL				12

3" DRAIN PIPE INSTALLED, MAX. FULL PIPE FLOW: 60 GPM.
 WITH TWO-MINUTE DRAINAGE PERIOD, 35 GPM REQUIRED
 (TABLE 1014.2.1)
 PROVIDE WITH SCHIER GB50 OR SIMILAR, 50 GPM CAPACITY

LEGEND & ABBREVIATION

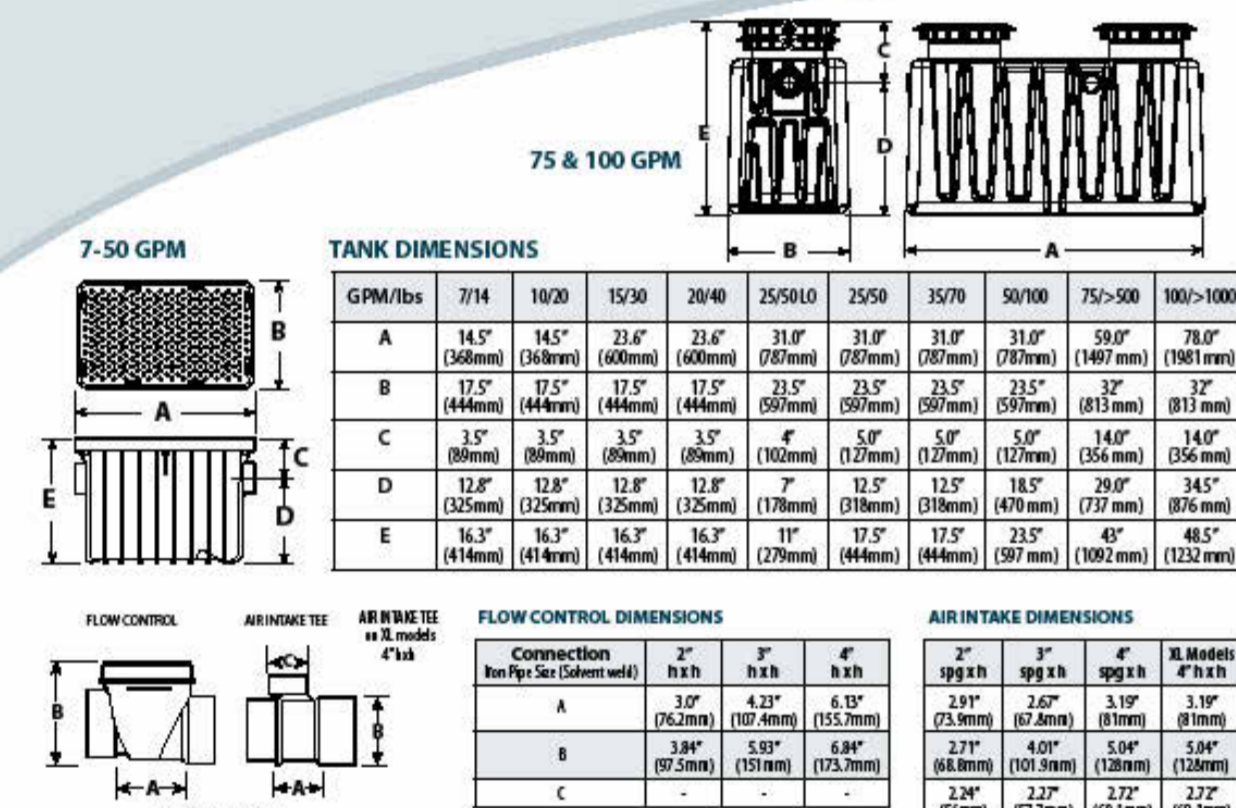
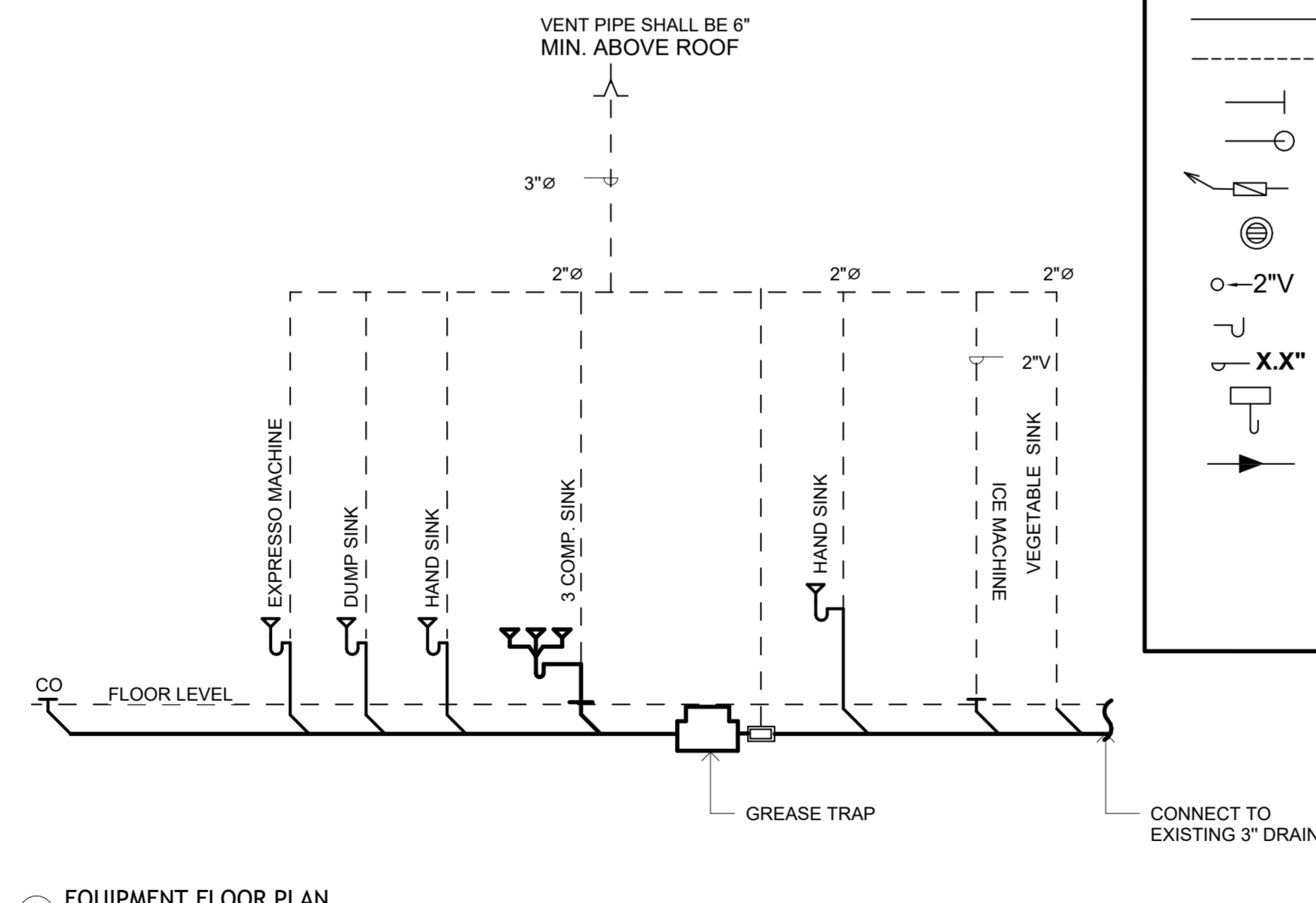
- GREASE WASTE PIPE UNDER SLAB
- SEWER WASTE PIPE UNDER SLAB
- 2" MIN. DRAIN PIPE ABOVE SLAB
- VENT (SIZE PER PLAN NOTES)
- WCO -- WALL CLEAN OUT
- FCO -- FLOOR CLEAN OUT
- TRAP SEAL PRIMER VALVE
- FLOOR DRAIN
- 2" V
- VERTICAL VENT PIPE & SIZE
- TRAP
- PIPE SIZE
- FLOOR SINK W/ TRAP
- FLOW & PIPE SLOPE DIRECTION
- F.D. FLOOR DRAIN
- F.S. FLOOR SINK
- H.S. HAND SINK
- M.S. MOP SINK
- D.W. DISHWASHER
- I.M. ICE MAKER

DRAINAGE FIXTURE SCHEDULE AND SIZING

DISCRPTION, MADE / MODEL	QT	TRAP SIZE	DFU (EACH)	DFU (TOTAL)
3 COMPARTMENT SINK	1	2"	3	3
HAND SINK	2	1.5"	2	4
DUMP SINK	1	1.5"	2	2
LAVATORY SINK EXISTING	-	-	-	-
WATER CLOSET (1.6 GPM) EXISTING	-	-	-	-
ESPRESSO MACHINE	1	1.5"	2	2
MOP SINK EXISTING	1	1.5"	2	2
VEGETABLE SINK	1	1.5"	2	2
TOTAL				15

NOTE: -- FIXTURE ITEM NUMBER PER EQUIPMENT SCHEDULE ON ARCHITECTURAL PLAN
 -- TRAP SIZING PER UPC TABLE 702.1
 -- PIPE SIZING PER UPC TABLE 703.2
 -- EXISTING WATER CLOSETS AND LAVATORIES NO CHANGE, THE DRAINAGE FIXTURE UNIT IS NOT COUNTED IN THIS SCHEDULE

2 EQUIPMENT FLOOR PLAN
1/4" = 1'-0"



TECHNICAL DATA

Part Number	196824	196825	196826	196827	196828	196829	196830	196831	196832	196833	196834	196835	196836	196837	196838	196839	196840
85 Gallons Per Minute - GPM (US)	7 (0.40)	10 (0.62)	15 (0.90)	20 (1.20)	25 (1.50)	30 (1.80)	35 (2.10)	40 (2.40)	50 (3.00)	75 (4.50)	100 (6.00)	150 (9.00)	200 (12.00)	250 (15.00)	300 (18.00)	350 (21.00)	400 (24.00)
Min. Grease Capacity - lb (kg)	14 (6.35)	20 (9.07)	30 (13.61)	40 (18.14)	50 (22.68)	60 (27.22)	70 (31.76)	80 (36.30)	100 (45.36)	150 (68.04)	200 (90.72)	250 (113.40)	300 (136.08)	350 (158.76)	400 (181.44)	450 (204.12)	500 (226.80)
Grease Capacity Actual (ASME A112.14.3 - lb (kg))	31.91 (14.46)	44.87 (20.35)	67.31 (30.54)	90.24 (40.94)	113.17 (51.34)	136.10 (61.74)	159.03 (72.14)	181.96 (82.54)	227.44 (103.18)	341.16 (154.94)	454.88 (206.74)	568.60 (257.54)	682.32 (309.34)	796.04 (358.14)	909.76 (410.94)	1023.48 (462.54)	1137.20 (514.14)
Average Efficiency - % (ASME A112.14.3)	95.0%	92.0%	89.0%	86.0%	83.0%	80.0%	77.0%	74.0%	71.0%	68.0%	65.0%	62.0%	59.0%	56.0%	53.0%	50.0%	47.0%
Operating Temperature Capabilities	20°F (0°C)	22°F (0°C)	24°F (0°C)	26°F (0°C)	28°F (0°C)	30°F (0°C)	32°F (0°C)	34°F (0°C)	36°F (0°C)	38°F (0°C)	40°F (0°C)	42°F (0°C)	44°F (0°C)	46°F (0°C)	48°F (0°C)	50°F (0°C)	52°F (0°C)
Clear-Land Rating	300 lb (133 kg)	300 lb (133 kg)	300 lb (133 kg)	300 lb (133 kg)	300 lb (133 kg)	300 lb (133 kg)	300 lb (133 kg)	300 lb (133 kg)	300 lb (133 kg)	300 lb (133 kg)	300 lb (133 kg)	300 lb (133 kg)	300 lb (133 kg)	300 lb (133 kg)	300 lb (133 kg)	300 lb (133 kg)	300 lb (133 kg)
Min. Test Load for Approval	400 lb (179 kg)	400 lb (179 kg)	400 lb (179 kg)	400 lb (179 kg)	400 lb (179 kg)	400 lb (179 kg)	400 lb (179 kg)	400 lb (179 kg)	400 lb (179 kg)	400 lb (179 kg)	400 lb (179 kg)	400 lb (179 kg)	400 lb (179 kg)	400 lb (179 kg)	400 lb (179 kg)	400 lb (179 kg)	400 lb (179 kg)
Unit Weight (empty)	12.0 lb (5.4 kg)	14.0 lb (6.3 kg)	18.0 lb (8.2 kg)	22.0 lb (10.0 kg)	26.0 lb (11.8 kg)	30.0 lb (13.6 kg)	34.0 lb (15.4 kg)	38.0 lb (17.2 kg)	46.0 lb (20.9 kg)	69.0 lb (31.3 kg)	92.0 lb (41.7 kg)	115.0 lb (52.2 kg)	138.0 lb (62.6 kg)	161.0 lb (73.0 kg)	184.0 lb (83.4 kg)	207.0 lb (93.9 kg)	230.0 lb (104.3 kg)
Liquid Capacity	12.0 gal (45.4 L)	14.0 gal (53.0 L)	18.0 gal (68.0 L)	22.0 gal (83.0 L)	26.0 gal (98.0 L)	30.0 gal (113.0 L)	34.0 gal (128.0 L)	38.0 gal (143.0 L)	46.0 gal (172.0 L)	69.0 gal (261.0 L)	92.0 gal (349.0 L)	115.0 gal (437.0 L)	138.0 gal (525.0 L)	161.0 gal (613.0 L)	184.0 gal (701.0 L)	207.0 gal (789.0 L)	230.0 gal (877.0 L)
Construction (material/finish)	2" 304 SS	2" 304 SS	2" 304 SS	2" 304 SS	2" 304 SS	2" 304 SS	2" 304 SS	2" 304 SS	2" 304 SS	2" 304 SS	2" 304 SS	2" 304 SS	2" 304 SS	2" 304 SS	2" 304 SS	2" 304 SS	2" 304 SS

U.S. Customers call IPEX USA LLC.
 Eastern U.S. Toll Free: 1-800-463-9572 Western U.S. Toll Free: 1-888-461-5307
 Endura® is a registered trademark. PYME02162204 © IPEX 2018



TANGO DESIGN

3820 N. 27TH STREET
TACOMA, WA 98407

PHONE #: 253-414-2647
EMAIL: TANGO615@HOTMAIL.COM

PROJECT NAME : **LABOBA**

2614 N Proctor St, Tacoma, WA 98407

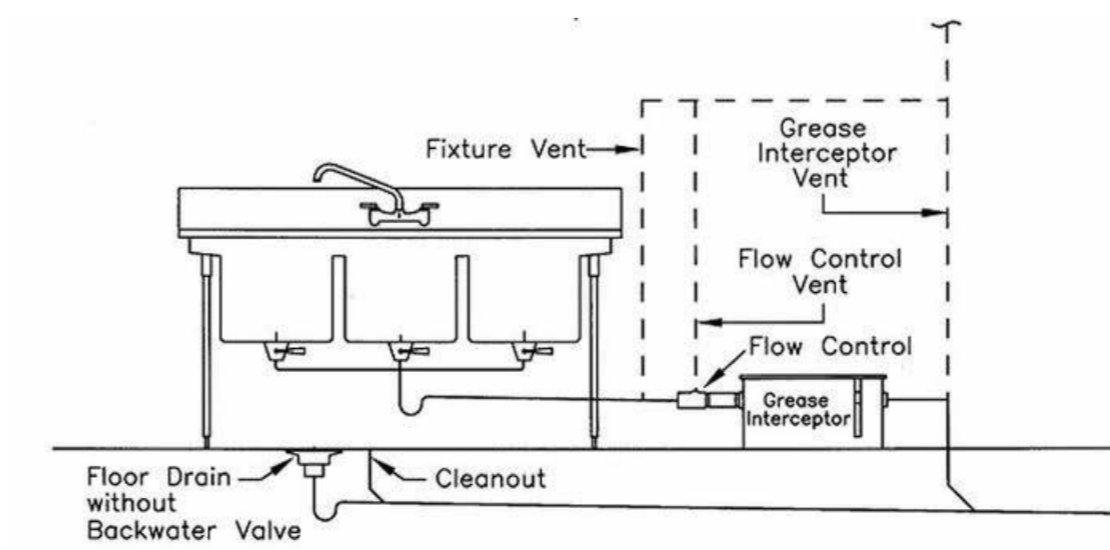
PLUMBING FLOOR PLAN & DETAILS

DATE: 5/21/2026 10:42:49 AM

A104

SCALE: As indicated

3 3 COMP SINK TO CONNECT TO GREASE TRAP
1 1/2" = 1'-0"



4 FLOOR CLEANOUT
1 1/2" = 1'-0"

